

2023-24

Governor Shapiro's Commonwealth Budget



Department of Human Services Budget Briefing

VALERIE ARKOOSH, MD, MPH // ACTING SECRETARY, DEPARTMENT OF HUMAN SERVICES



pennsylvania
DEPARTMENT OF HUMAN SERVICES

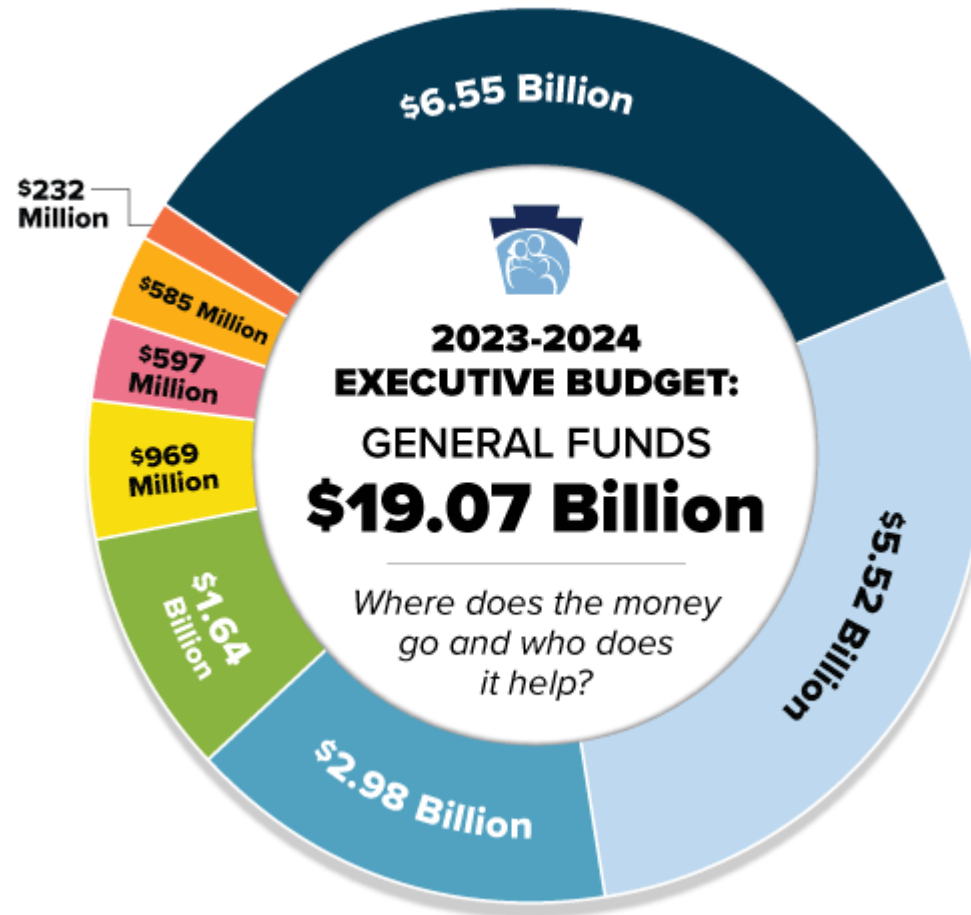
Human Services Spending **OVERVIEW**



pennsylvania
DEPARTMENT OF HUMAN SERVICES

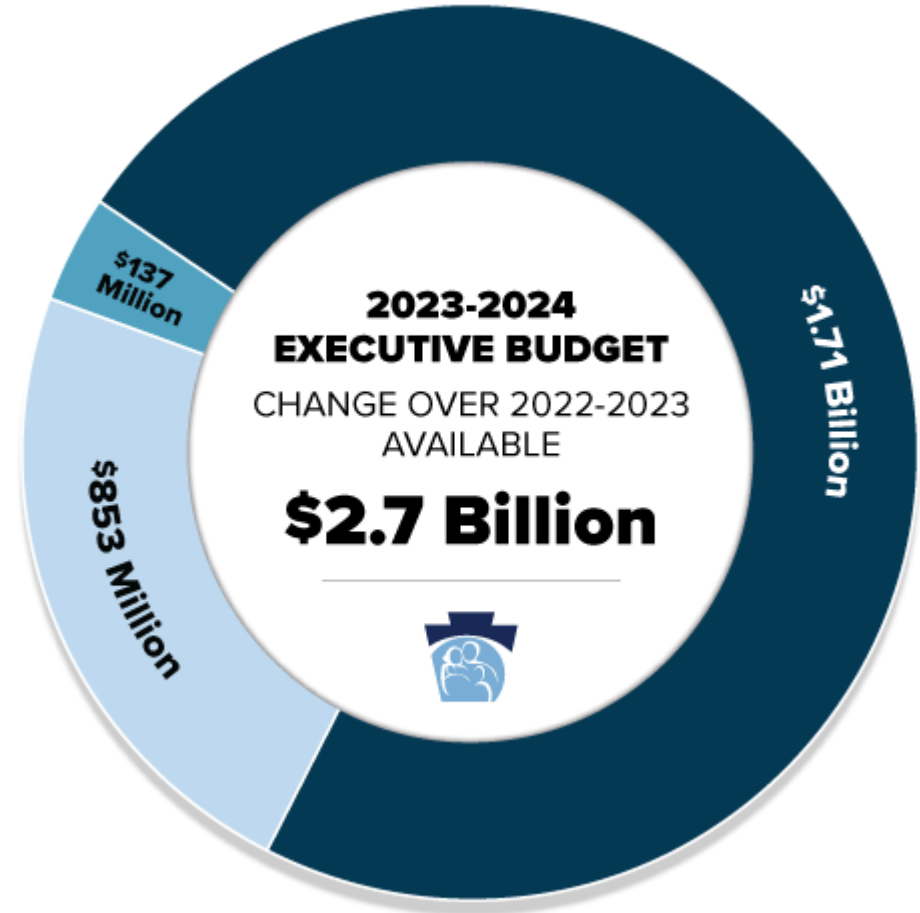
The Department of Human Services Budget

- Medical Assistance & Health Care Delivery
- Long-Term Living
- Intellectual Disability/Autism Services
- Human Services (Child Welfare, Other Programs)
- Mental Health & Substance Abuse Services
- Child Development
- Income Maintenance
- Human Services Supports



The Department of Human Services Budget

- Decreasing COVID-19 enhanced federal Medicaid match funding and related impacts
- Changes in costs, program utilization, and Pennsylvanians served by DHS programs
- DHS initiatives



2023-24

Budget Initiatives

March 2023



Governor Josh Shapiro's 2023-24 Commonwealth Budget

- **Cutting costs for Pennsylvanians**
- **Building economic prosperity**
- **Building a strong, skilled workforce**
- **Investing in children and students**
- **Ensuring people are and feel safe in their communities**
- **Protecting vulnerable populations**
- **Safeguarding our environment**
- **Supporting Pennsylvanians' mental health and well-being**
- **Investing in essential services and healthier communities**



Cutting Costs for Pennsylvanians

- **Expanding the Property Tax and Rent Rebate Program**
 - This program helps Pennsylvania's seniors and people with disabilities afford and stay in their homes.
 - Governor Shapiro's budget proposes raising the income cap for both homeowners and renters and increasing the maximum rebate from \$650 to \$1000 each year.
 - Will also tie future maximum incomes to inflation, allowing the program to be responsive to the economic climate.
 - Expansion will allow approximately 173,000 new people to benefit from this program and will increase assistance for nearly 400,000 people who currently qualify.



2023-24 Budget Initiatives

Building a Strong Workforce

- **Supporting Pennsylvania’s Child Care Industry and Supporting Access to This Essential Care**
 - **Child Care Works Base Rate Funding** – Investing \$66.7 million to maintain the 60th percentile floor based on the 2022 Child Care Market Rate survey results.
 - **Parents in School Initiative** – Devoting nearly \$4 million to help parents pursuing a degree or industry-recognized certification.
 - **Head Start Supplemental Program** – Increasing funding by \$2.7 million to support staff recruiting.
- **Investing in Workforce Training and Apprenticeship Programs** – Allocating nearly \$24 million to support and expand training programs that help Pennsylvanians build enriching, family-sustaining careers.
- **Supporting Recruitment and Retention for High-Need Professions** – Helping Pennsylvania recruit and retain high-need positions like teachers and nurses by investing \$24.7 million to establish a refundable tax credit of \$2,500 for three years. This will be available through the Personal Income Tax for individuals who obtain a license or certification in these fields or move to PA with a recognized license or certification.



Investing in Children and Students

- **Continuing Universal Free Breakfast for All Pennsylvania Students**
 - \$38.5 million will be used to continue universal free breakfast programs for all students, regardless of their family's income.
 - Continues pandemic flexibilities that extend school meal assistance to all students, eliminating risk of stigma within schools that can prevent students from getting the meals and daily nutrition they deserve.
 - This will give every student the daily foundation they need to be physically and mentally nourished and prepared for the school day.



Protecting Vulnerable Populations

- **Investing \$16 million to Increase SNAP Benefits for Seniors and Pennsylvanians with Disabilities**
 - Will increase the minimum monthly SNAP benefit for seniors and people with disabilities to \$35 each month
 - Based on December 2022 data, this increase will reach more than 105,000 people.
- **Expanding Supports for People with Intellectual Disabilities**
 - **Reducing the Home and Community-Based Services Waiting List** – Invests \$17.5 million to reducing the waiting list by 850 between the Community Living Waiver and Consolidated Waiver.
 - **Expanding LifeSharing Opportunities** – Invests \$3.4 million to add day service to LifeSharing, providing assistance for host families to obtain help with care during the day if the family has out-of-home employment.
 - Through this expansion, LifeSharing opportunities would be boosted as a viable full-time community living option in addition to group homes.
 - **Increasing Telemedicine Assessments and Coordination** – Invests \$700,000 to expand telehealth consultations and assessments for people with intellectual and developmental disabilities. Being able to offer these individuals and their loved ones real-time support on health issues and medical needs will reduce potentially avoidable hospital visits and admissions.



Protecting Vulnerable Populations

- **Supporting Skilled Nursing Facilities** – Allocates \$1.9 million for staffing and development of a registration system to ensure compliance and mitigate risks in long-term care settings.
- **Helping Pennsylvanians with Disabilities Live Independently** – Supports the work of Pennsylvania’s nine Centers for Independent Living who advocate for and support Pennsylvanians with disabilities by investing \$684,000 to assist with staff recruitment and retention.
- **Investing in Licensing Oversight** – DHS’ licensing authority exists to protect children, seniors, people with disabilities, and people with behavioral health needs who are receiving care from licensed day and residential programs. To support this work and strengthen oversight and partnerships with providers, \$2.2 million will support establishing additional positions across four of DHS’ licensing offices.



2023-24 Budget Initiatives

Supporting the Mental Health of Every Pennsylvanian

- **Investing in Mental Health Supports and Services** – Governor Shapiro’s proposed budget makes significant investments in school-based mental health services and supports and in supports targeted towards Pennsylvania’s agricultural community.
- **Increasing Base Funding to County-Level Mental Health Programs** – Investing \$20 million to support county mental health programs and setting a path to grow this commitment through the 2027-28 state fiscal year.
- **Supporting Community-Based Options for Care**
 - **People Involved in the Criminal Justice System** – Helping grow community-based programs that avoid institutionalization for people with serious mental illness involved with the criminal justice system through a \$4 million investment.
 - **Community Hospital Integration Project Program (CHIPPs)** -- \$1.25 million will help move 20 eligible individuals from state hospital to community-based placements.
- **Building Sustainable Funding for Pennsylvania’s 988 Infrastructure** – The introduction of 988 has made accessing crisis supports easier than ever, and we must be sure this resource can support the increased access. This budget will:
 - Invest \$5 million to support call center operations and staffing
 - Establish ongoing funding supports using 2.75 percent (\$2.8M in FY 2023-24) of the 911 surcharge, which is also increased in the 2023-24 Budget.



UPCOMING PRIORITIES



pennsylvania
DEPARTMENT OF HUMAN SERVICES

End of SNAP Emergency Allotments

- Under the federal COVID-19 public health emergency (PHE), states were able to request and issue additional SNAP funds each month – called Emergency Allotments (EAs).
 - EAs have been issued monthly since March 2020
- EAs brought a household up to the monthly maximum benefit for their household *or* \$95 – whichever amount is greater.
- Federal Consolidated Appropriations Act of 2023 ended EAs effective March – households will receive just one payment moving forward.
- Please help spread the word on resources that can help – materials available from DHS and partners at dhs.pa.gov/SNAPCares.



Preparing for End of Medicaid and CHIP Continuous Coverage

- Under the federal public health emergency (PHE), states could receive enhanced federal Medicaid funding if continuous coverage was maintained through the PHE.
 - CHIP coverage was maintained through pandemic flexibilities
- Federal Consolidated Appropriations Act of 2023 separates continuous coverage from PHE. Continuous coverage requirement ends March 31. Normal renewal processing will resume April 1, 2023.
- Renewals will occur over a 12-month unwinding period – **all maintained Medicaid and CHIP households will have the opportunity to renew. No one will automatically or immediately lose coverage.**
- Pennsylvania has been planning for an eventual end of the federal PHE and a return to pre-pandemic Medicaid and CHIP eligibility determinations. We are ready to help Pennsylvanians stay covered.
- Please help spread the word about the urgent need to complete renewals on time – dhs.pa.gov/phe for resources and information about renewals.



Thank you for joining us!

March 2023



pennsylvania
DEPARTMENT OF HUMAN SERVICES

16